

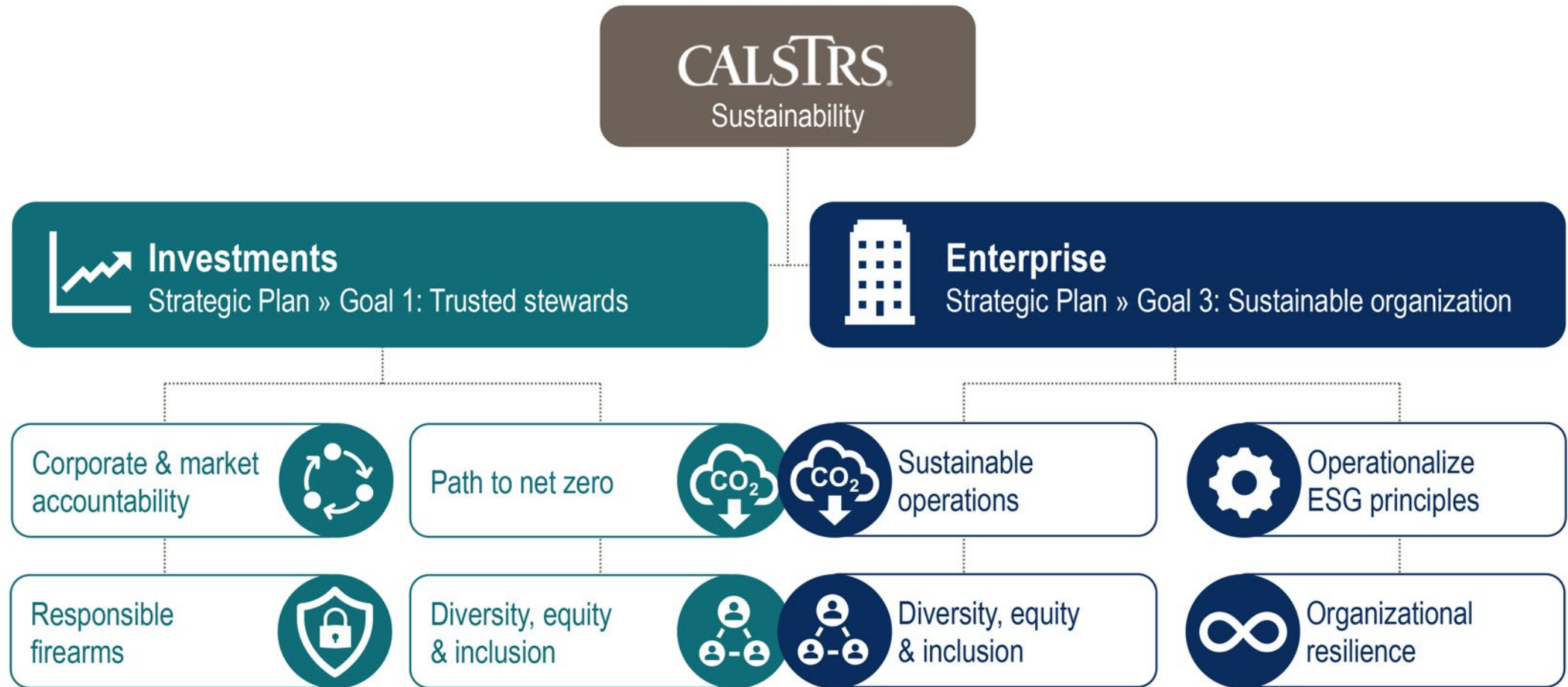
CALSTRS

Enterprise Sustainability Update

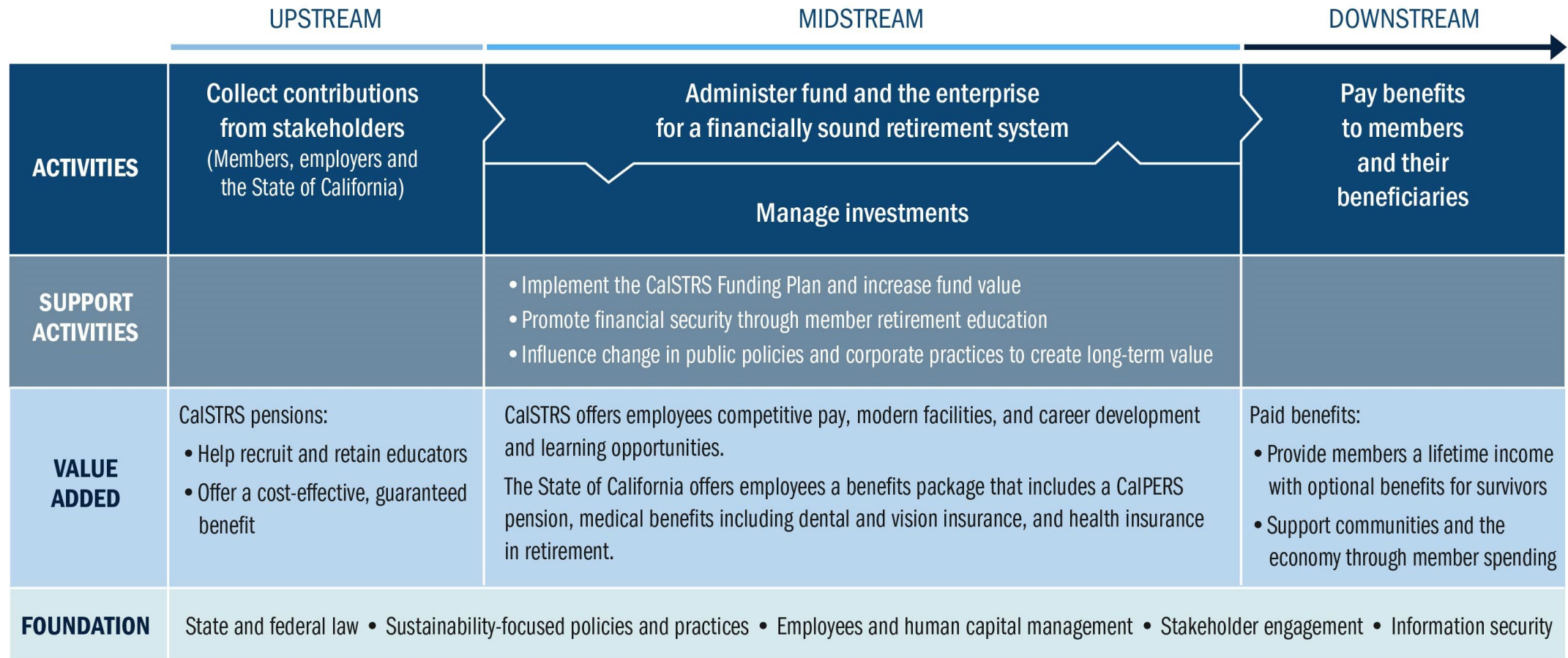
September 1, 2022



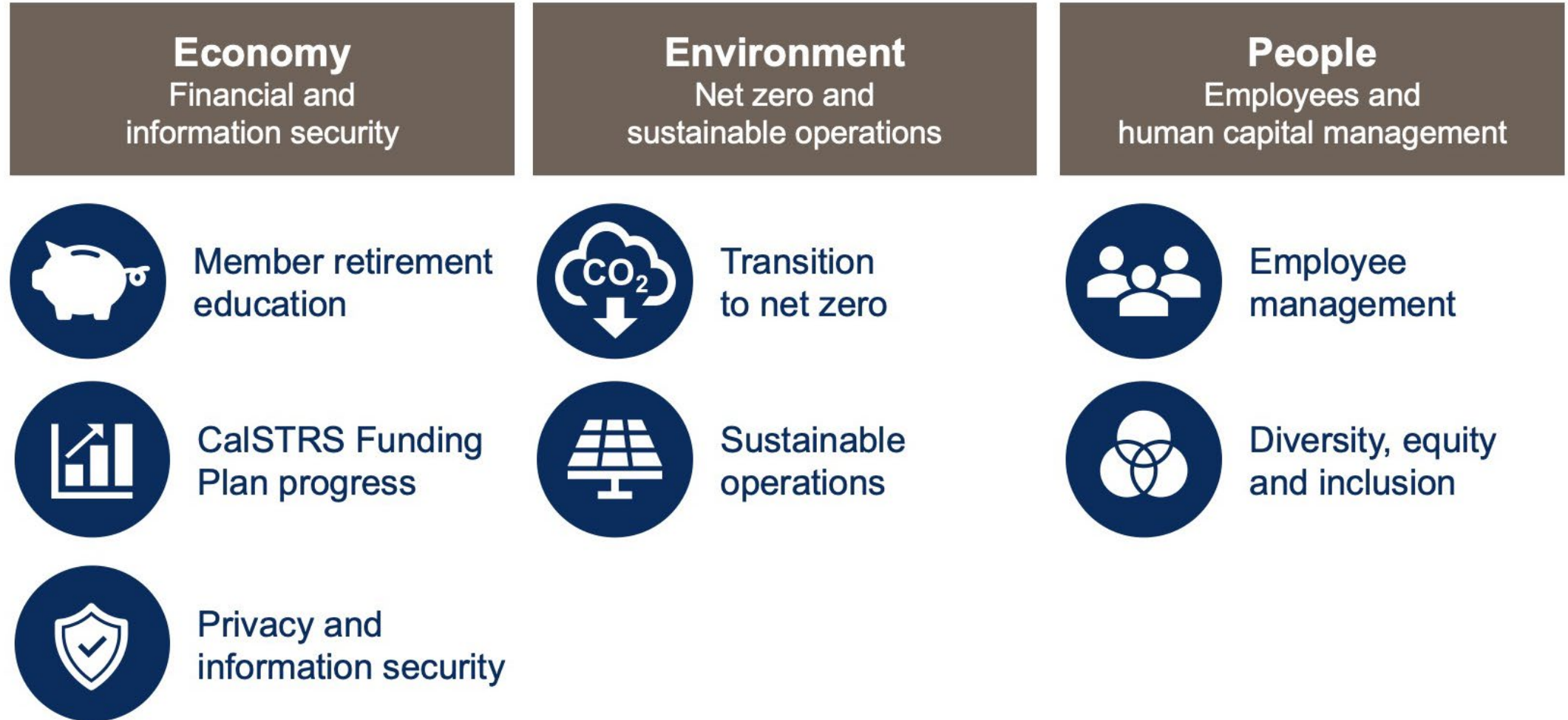
Sustainability at CalSTRS



Value chain map



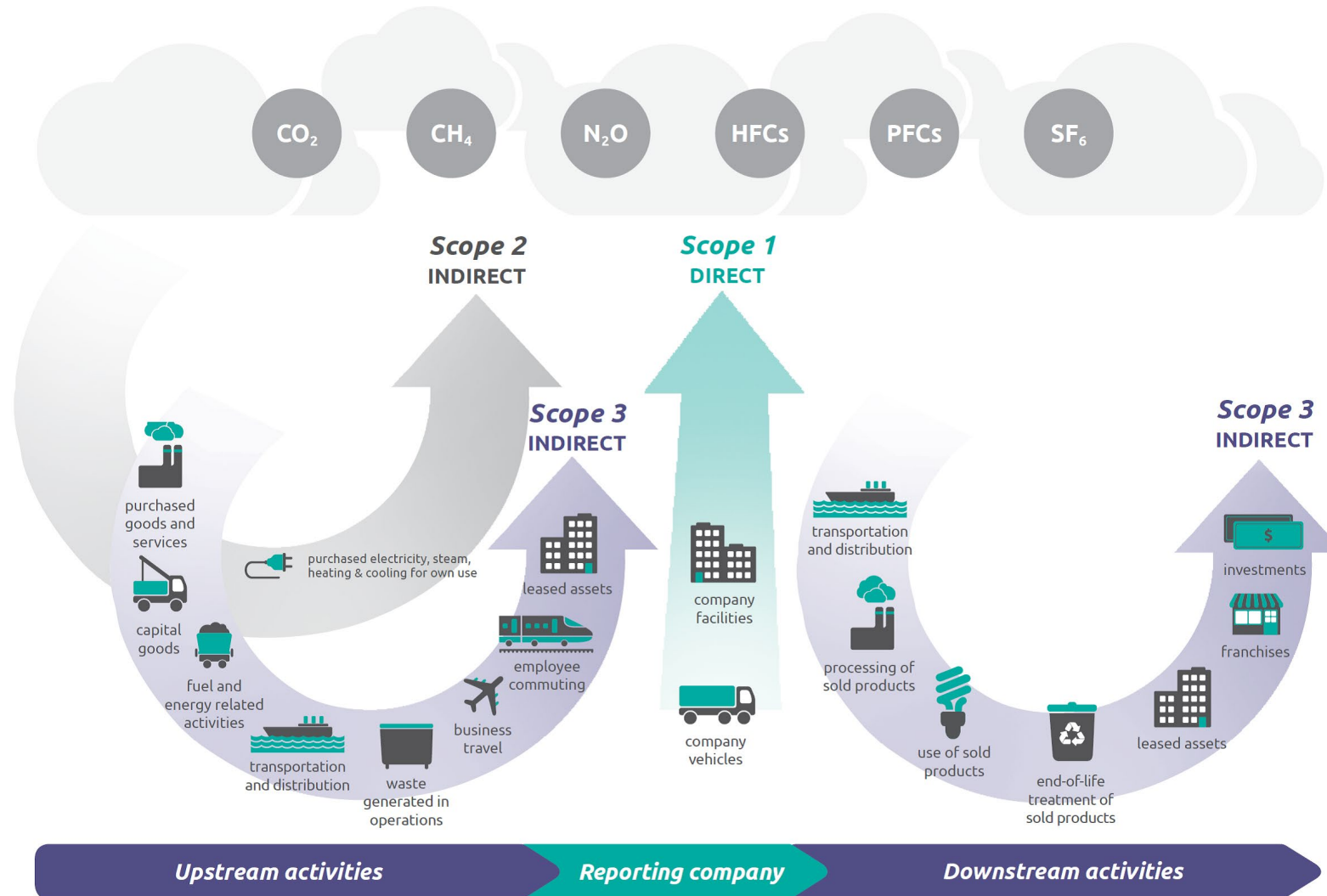
Sustainability-related topics



Enterprise greenhouse gas activities





GHG protocol scopes and emissions across the value chain



Source: [WRI/WBCSD Corporate Value Chain \(Scope 3\) Accounting and Reporting Standard](#)

Enterprise scope 1 and scope 2 emissions

2020 calendar year

Category	Metric tons of CO ₂ e
 Scope 1: Fuel (HQ)	124
 Scope 2: Electricity (HQ)	919
Purchased renewable energy certificates	-919
Total net scope 1 and 2 emissions	124 metric tons

Enterprise scope 3 emissions categories



Procurement
(goods and services)



Fuel- and energy-related
activities



Employee commute



Waste



Business travel



Upstream leased assets
(MSCs)

Next steps